

HELP WANTED

Nat'l R/E Mgmt firms seeks P/T Admin Asst 1pm-5pm M-F. Knowledge of MS Word & Excel a+. Fax Resume & Salary requirements to: **908-709-0337**

HELP WANTED

VOLUNTEERS NEEDED
Westfield Volunteer Rescue Squad seeks persons willing to train as Emergency Medical Technicians. No prior exp. needed. Valid NJ Driv. Lic., req., min. 4 hrs/wk. We offer 24 hr. coverage. Wkday 9am - 1 pm or 1-5pm slots are perfect for parents of school children. **Childcare reimbursement available!**

Seeks trainees as Dispatchers. Min. 2 hrs./wk. All training provided. **Call the Recruiting Team at (908) 233-2500 for details**

HELP WANTED

Quality Day Camp in Morris County has staff openings in the following areas: Swim (LGT or WSI), High ropes, Sports, Photography and Roller Hockey. **Please call 973-895-3200 or email us at info@hhdc.com.**

HELP WANTED

LEGAL SECRETARY for sole practitioner in Westfield. Emphasis on REAL ESTATE, ESTATE PLANNING and general practice. Very quiet office but must be organized and able to work independently. FT with flexible hours, if necessary. Please call 908-654-4345 between 9 AM and 3 PM or fax resume to 908-654-7043.

HELP WANTED

INCREDIBLE OPPORTUNITY
Highly successful Cranford-based corporate real estate services firm seeks an addition to our team for new business development. The ideal candidate is highly motivated, articulate and outgoing. Excellent phone and people skills a must. Former executive assistant or executive-level business generation experience a plus. Flexible hours/schedule. Competitive salary plus fantastic bonus opportunities. Send resume/qualifications in confidence to:

THE ACCLAIM GROUP, LLC
info@acclaim-group.com
908-653-0888 (Fax)

HOME FOR SALE

BERKSHIRES: Begin the experience in 5 Bedroom, 2 1/2 Baths, 2 decks, contemporary "all year" house. Lenox Location. **Call Beth at Giles Real Estate, Broker at: (866) 784-GILE**

CHILDCARE WANTED

Wanted: Loving, Playful, responsible person to care for our 2 year old boy; Tuesday or Friday mornings and early Saturday evenings in our Westfield home. Must have own transportation and references. Please call (908) 301-9417

See it all on the Web!
www.goleader.com

PUBLIC NOTICE

TOWN OF WESTFIELD INVITATION TO BID

Sealed proposals will be received by the Town of Westfield in the Council Chambers at the Municipal Building, 425 East Broad Street, Westfield, New Jersey, at 10:00 AM prevailing time on Monday, May 13, 2002, for the "2002 ROAD IMPROVEMENTS, CHANNING AVENUE/DICKSON DRIVE, IN THE TOWN OF WESTFIELD, NEW JERSEY".

The work under this Proposal includes the furnishing of all labor, materials and equipment necessary to complete the work as shown on the Contract Drawings and described in the Contract Specifications, and Proposals shall be in accordance with such Drawings and Specifications and the terms proposed in the Contract.

The major items of work under this contract include, but are not limited to, the following in estimated quantities:

- 4,450 square yards of 4 inch thick stabilized base course
- 5,200 square yards of 2 inch thick surface course
- 825 cubic yards of roadway excavation, unclassified
- 2,970 linear feet of granite block curbing
- 425 square yards of bituminous concrete driveway repair

The successful bidder shall start construction ten (10) days after notice of award of Contract is given, and shall complete all work within sixty (60) calendar days after notice to proceed.

Proposals shall be in writing on the forms furnished and must be delivered at the place and before the hour above mentioned, and must be accompanied by a certified check or bid bond payable to the Town of Westfield in an amount equal to at least ten percent (10%) of the base amount of the bid, but not less than \$500.00 nor more than \$20,000.00. Each bid must also be accompanied by a Surety Company Certificate stating that said Surety company will provide the bidder with the required Performance bond in the full amount of the Contract, by a Non-Collusion Affidavit and a Contractor's Qualification Statement, Statement of Ownership, on the forms included in and explained in the contract documents.

Bidders must be in compliance with all provisions of Chapter 127 P. L. 1975 supplement to the law against discrimination (Affirmative Action) and must pay workmen the prevailing wage rates promulgated by the New Jersey State Department of Labor and Industry for this project, copies of which are on file in the Office of the Town Engineer.

Plans and specifications may be seen or procured at the office of the Town Engineer, Public Works Center, 959 North Avenue West, Westfield, New Jersey. The non-refundable cost of contract documents is \$50.00 made payable to the Town of Westfield, which must be paid in cash or certified check. The Mayor and Council reserve the right to reject any bid, and to waive any informality in any bid, if in the interest of the Town, it is deemed advisable to do so.

Kenneth B. Marsh
Town Engineer
1 T - 4/25/02, The Leader Fee: \$63.24

CLASSIFIEDS

APARTMENT FOR RENT
Westfield - 2 Bedroom Apartment, with attic, and garage. Quiet street, with easy walk to train station, garage, no pets, \$1,250 per month plus Utilities, Available late April. **Call (908) 414-0435**

FOR RENT
WESTFIELD - Oversized 2 car garage, ideal for storage. Immediate availability. Safe, secure location. \$295.00/m **Call Lori 973-397-3541 or evenings 973-540-1671.**

HELP WANTED
Medical Receptionist, basic computer knowledge necessary, good communication skills, part time hours, (18) weekly. **(908) 233-5500**

TUTORING
Experienced Tutor with MA-History Rutgers Univ. will tutor HS-College students in history and composition. **Call Alex 732-549-2339**

HOUSE CLEANING
GET IT DONE RIGHT! EXPERIENCE, QUALITY, HONESTY! LOCAL REFERENCES. **CALL 973-418-6550**

HOUSE CLEANING
15 Years Experience Good References and Quality Will Clean Your Home or Office. **Diana (908) 232-4954**

CHILDCARE HELP
Experience as tutor, mother's helper & camp counselor. Have own car. Avail. June 1 - August 16, no weekends. **Call Erica (908) 803-4441 email: em2017@barnard.edu**

Area Resident Supports Syracuse Literacy Corps

BERKELEY HEIGHTS — Diana Schiele of Berkeley Heights was among the student volunteers serving in the Syracuse University Literacy Corps.

The Syracuse Literacy Corps is a service learning experience that mobilizes Syracuse students to mentor and tutor students at elementary and secondary schools in the Syracuse City School District, Lafayette Central School District and community based organizations. During the academic year, Diana tutored an average of 10 hours per week.

The program reaches more than 1,800 at-risk children at 23 sites in Central New York and is supported by the Karen B. Winnick Foundation, the Central New York Community Foundation, the University's Office of Academic Affairs, and the Federal Works Study Program.

PUBLIC NOTICE
BOROUGH OF FANWOOD PLANNING BOARD

Notice is hereby given that the PLANNING BOARD OF THE BOROUGH OF FANWOOD after public hearing granted approval to Mr. Daniel Librandy to construct a deck on the property at 32 Glenwood Avenue, Fanwood, New Jersey being Block 71 Lot 10.

Documents pertaining to this application are available for public inspection at Borough Hall during normal business hours.

Daniel Librandy
32 Glenwood Road
Fanwood, New Jersey 07023
1 T - 04/25/02, The Times Fee: \$15.30

OFFICE FURNITURE
For Sale
Desk, Chairs, File Cabinets, Workstation, Tables and more. Best Offer. **(908) 322-6007**

FLOOR REFINISHING
Applied Wood Refinishing & new floors. 900 types of wood. VISA/MC
908-874-7179

GARAGE SALE
Saturday 4/27, 9 - 5
Raindate 4/28
Lots of gently used furniture and baby gear.
720 Tamaques Way, Westfield

CONTACT We Care Salutes Dedication of Its Volunteers

SCOTCH PLAINS — CONTACT We Care has joined a nationwide celebration to honor community volunteers during National Volunteer Week, April 21 to 27.

"Celebrate the American Spirit - Volunteer!" is the week's theme and is described as reflecting the American tradition of neighbor helping neighbor.

CONTACT We Care's more than 100 volunteers anonymously offer comfort and reassurance to individuals who are overwhelmed with anxiety, grief, loneliness, and despair.

The organization provides a 24-hour crisis help-line, (908) 232-2880, for people struggling with stressful situations, as well as a crucial link to the outside world for socially isolated elderly and homebound individuals.

"Last year, CONTACT volunteers contributed 8,519 hours on the hotline. If we were to pay our volunteers at a rate of \$10 per hour, that would be \$85,000 annually," said Katie Feeks, Executive Director of CONTACT We Care.

"Trained professional staff to man the hotline would demand an even

OFFICE SUITES AVAILABLE
Westfield. Prime location, center of town, in modern elevator building. High ceilings, palladian windows. Adj parking and NY trains. 4,200 sq. ft. to divide. **email: RSSLKS2@aol.com ph: (908) 561-3583**

FOR SALE
MAYTAG Stacked Washer-Dryer: (gas-powered), only used for 6 months before placing in storage due to re-location. Originally \$1,100; now asking \$500. **Call (908) 389-1389**

HOUSE CLEANING
House Cleaning Affordable & Trustworthy Please call Jennifer (908) 486-4722

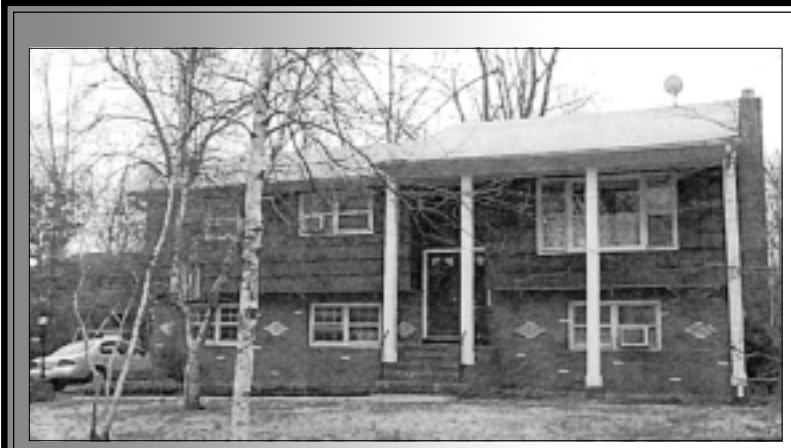
higher salary, in the range of \$15 to \$20 per hour," she added.

"Without volunteers, it would be impossible for us to serve the communities we do, as our operating budget could increase by 25 to 50 percent annually," she revealed.

Highly-trained volunteers provide confidential crisis intervention, reassurance, support and information and referrals on community resources to callers.

Established in 1975, CONTACT We Care is a faith-based organization, serving residents in Union, Essex, Middlesex, and Somerset counties. It receives financial support from private foundations, individuals, the United Way, religious and corporate organizations and through agency fund-raising events such as CONTACT's Annual 5K Race. This year's event is scheduled for Saturday, August 17.

Summer training classes for new CONTACT volunteers will begin on Monday, July 8. To learn more about volunteer opportunities, to make a contribution to CONTACT We Care, or to register for the classes, please call (908) 490-1480. The fax number is (908) 490-1483.



Westfield - 1120 Irving Avenue
Bi-Level located on a quiet dead-end street. Features include 4 Bedrooms, 3 full Baths, Family Room with fireplace and sliding doors open to patio. 2 car garage and hardwood floors. New roof and newly painted driveway. Gas forced air heat. Taxes: \$7,794.00. A one owner house being offered for **\$410,000**. Call (908) 233-4755 to make an appointment.

Arboretum to Present 'Celebrate the Earth Day'

SUMMIT — Family-friendly environmental topics will be featured at Celebrate the Earth Day on Saturday, April 27, at the Reeves-Reed Arboretum in Summit.

Various activities will be held between 10 a.m. and 2 p.m., including planting, seed balls, nature crafts and bird feeders. There will also be animal displays, including composting with worms, Monarch butterflies and honeybees. A representative from New Jersey-American Water Company will discuss how to conserve water.

Children are invited to illustrate an earth-friendly fact on a poster and enter the poster in a contest. All posters will be displayed at the Celebrate the Earth event. For more information about the poster contest, please call (908) 273-8787.

Wisner House, the Arboretum's headquarters, will be open. On display will be "Olmsted in Union County," a photographic record of famed landscape designer Frederick Law Olmsted's work in Union County.

This exhibit, by Berkeley Heights photographer Nancy Ori, will only be on display until Monday, May 13, and is not usually available for viewing on weekends.

Admission to Celebrate the Earth is \$5 per child. Youngsters under age 2 and adults are free. Families are invited to bring a picnic and eat lunch on the Arboretum's lawn. Pre-

payment is required. Interested individuals may stop by the facility or mail their payment to Reeves-Reed Arboretum, 165 Hobart Avenue, Summit 07901.

Two Programs Slated On Elder Concerns

BERKELEY HEIGHTS — SAGE, a private, not-for-profit organization that provides services to the elderly and their caregivers, has scheduled two programs for next month.

On Tuesday, May 7, Dr. Richard Olsen will be the featured speaker at "Creating a Safe Home Environment," sponsored by SAGE's Spend-A-Day Adult Day Health Center.

Dr. Olsen will discuss tactics for creating a proper and safe environment for older adults and those with special needs through home modifications and behavioral management strategies.

On Tuesday, May 21, Dr. Gerald Williams will speak on "End of Life Medical Treatments: Some Moral Considerations."

Both programs will begin at 7:15 p.m. and will be held at Spend-A-Day Adult Day Health Center, located at 550 Springfield Avenue in Berkeley Heights. Program fees are \$5 and reservations are suggested. For information or to register, please call (908) 464-8217.

OPEN HOUSE... Sunday April 28, 1-4 PM
1340 Cushing Road, Scotch Plains
(Terrill Road to Cushing Road)



Back to front Split Level offers Living Room with raised hearth fireplace, Split Bay Window and skylight, Dining Room overlooking in-ground pool, new roof, windows and skylights.

Offered at \$468,000

For your own personal appointment, call Dorothy at:

Direct Line: (908) 233-2248
Cell: (908) 305-5635



Dorothy McDevitt, CRS, GRI
Broker / Sales Associate
Certified Residential Specialist



Westfield Office • 600 South Ave. W. • (908) 233-0065



To Be Built \$489,900

This fabulous Colonial home is to be built in one of Fanwood's most desirable areas. Convenient to schools, town and transportation offering a wonderful lifestyle for today's family. Quality building materials with a great design provides 4 generous Bedrooms, 2 1/2 Baths and a 2-car attached garage make this home a joy and value to own.

For more information please contact:
Susan Massa, CRS Broker Associate/Specialist (908) 233-6679
NJAR Million Dollar Distinguished Sales Club
Presidents Elite 2002, Presidents Club 2001
Leader's Circle 2000, Member Registry of Distinction



E mail smassa5207@aol.com
[Http://SusanMassa.Realtor.com](http://SusanMassa.Realtor.com)
BURGDORFF REALTORS ERA
600 North Ave., Westfield NJ 07090

COLDWELL BANKER
EXPERIENCE, TRUST, RELIABILITY SERVICE



WESTFIELD \$519,900
Quality 3000 (+) square foot home to be built in Manor Park with flexible floor plan. Featuring an entrance Foyer; Living Room; Dining Room; Kitchen with granite counters; Family Room; 4 Bedrooms; including a master suite with bath and walk-in closet; 2 1/2 Baths; a 2 car attached Garage; Recreation Room and more. **WSF6229**



FRANK D. ISOLDI
Broker / Sales Associate
NJAR Million Dollar Sales Club 1993-2001
Gold Level 1999 - 2001
(908) 301-2038 Direct Line



Westfield Office • 209 Central Avenue • (908) 233-5555