



SUPPORTING YOUTH...Artists Harry and Wende Devlin of Mountainside, pictured left and second from left, display prints of their paintings to be raffled off for the benefit of the Westfield High School girls' lacrosse program.

Devlins Donate Two Prints To Benefit Girls' Lacrosse

WESTFIELD — Well-known artists Harry and Wende Devlin of Mountainside have donated two prints to be raffled off at the Girls Lacrosse Dessert on Monday, June 7.

Proceeds from the sale of raffle tickets will benefit Friends of Girls Lacrosse, which funds the entire varsity, junior varsity and freshman girls' lacrosse program at Westfield High School.

are available and are priced at \$5 each. They may be purchased at Athletic Balance II at 241 South Avenue, and Juxtapose Gallery at 58 Elm Street, where the framed prints are displayed.

Tickets may also be purchased at Burgdorff Realtors ERA, 600 North Avenue, West.

Matting and framing of the prints have been donated by Juxtapose Gallery, where other Devlin prints are available.

Jumble Store to Hold Annual Spring Sale

The Jumble Store's Annual Spring Sale will take place on Saturday, March 27, from 10 a.m. to 3 p.m. in the upstairs room of the store, located at 110 Walnut Avenue in Cranford.

A selection of quality clothing will be featured, along with merchandise ranging from sporting goods to home décor items, as well as gifts appropriate for Easter, Mother's Day and graduation. Refreshments will be available.

The Jumble Store is operated by the Junior League of Elizabeth-Plainfield (JLEP), and all proceeds from the store benefit community service projects.

The JLEP is an organization of women committed to improving their communities through the effective action and leadership of trained volunteers, according to organization spokeswoman Beth St. Raymond.

Membership is open to all women over age 21 regardless of race or creed. For information, please call (908) 709-1177.

Mount Saint Mary Slates Annual Fashion Show

Mount Saint Mary Academy in Plainfield-Watchung, will hold its 22nd Annual Fashion Show on Sunday, March 21, at 11:30 a.m.

The Mercy Guild of Mt. Saint Mary Academy will sponsor its annual Luncheon/Fashion Show - "Swing into Spring" at the Hanover Marriott Hotel, Route 10, Whippany. All proceeds from the event will benefit the technological and educational needs of the Academy.

The event is noted for a wide-range of theme-inspired gift baskets, which are raffled, as well as specialty items. Last year, three winners of the 50/50

drawing each took home \$2,500.

The fashion show will be coordinated by Christine Modeling and Casting and will feature a variety of spring fashions from Macy's. Prom fashions will also be modeled by Academy students, who will be joined by students from St. Joseph's High School in Metuchen.

Last year the Mercy Guild was able to make a contribution of \$26,000 to the school to assist in upgrading the computer system.

For tickets and information, please call Jackie Yudd at (908) 232-5013 or Judy Darlington at (908) 889-5153.

Community Access to Hold Strategic Fundraising Event

Community Access Unlimited will be the host of the Strategic Fundraising Workshop during the week of March 22 to March 26.

The new training will be offered by the Grantsmanship Center, which is the oldest and largest grantsmanship training organization for non-profits.

The workshop is a comprehensive five-day workshop covering all aspects of developing a strategic fundraising plan for your organization. An overview of the most productive fundraising methods, including annual fund drives, special events, and capital campaigns will be available.

The workshop will also discuss how to do a fundraising audit, apply business techniques to a fundraising plan, write a case statement, and motivate your board to raise money.

The Grantsmanship Center's tuition fee for the program will be \$595. Program registration, which is limited to 25 is handled through the Grantsmanship Center.

For further information about the program or to receive an informational brochure, please call the Grantsmanship Center at 1-800-421-9512 or (213) 482-9860 or Community Access Unlimited at (908) 354-3040.

Recreation Department To Sponsor Art Classes

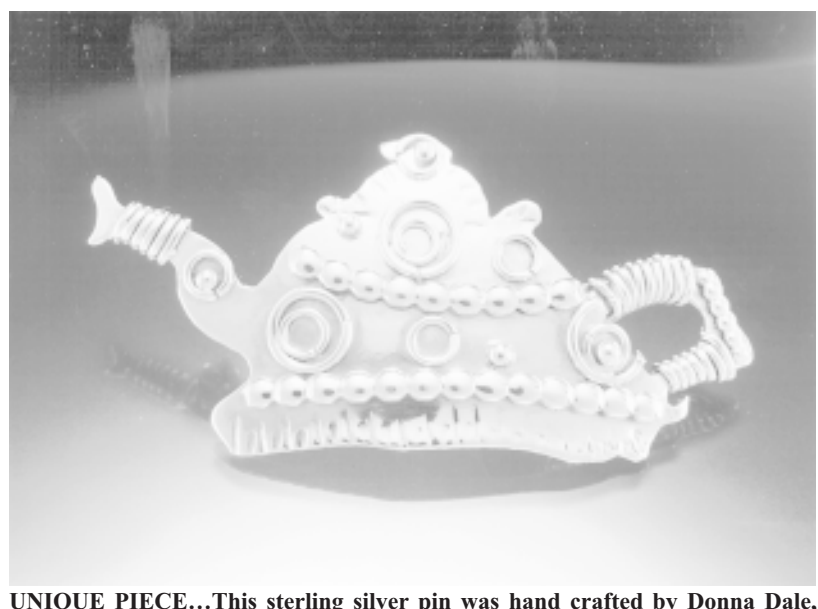
FANWOOD — The Fanwood Recreation Commission will sponsor eight-week long art classes, beginning Friday, April 16.

Subjects to be covered include drawing, painting and sculpture.

Instructor Barbara Prestidge, a local artist and certified art teacher, will lead the course.

Classes will be held on Fridays from 3:45 to 4:45 p.m. for 6 to 9 year old children. Classes for 10 to 14 year olds will be held from 4:45 to 6 p.m. All classes will be held on Fridays.

Registration for the classes will be held on March 27 at the La Grande Building, starting at 9 a.m. The cost is \$35 for residents and \$50 for non residents.



UNIQUE PIECE...This sterling silver pin was hand crafted by Donna Dale, whose work will be exhibited at the Westfield Craft Market at the National Guard Armory on Rahway Avenue. The event, featuring 140 exhibitors, will run from Friday through Sunday, March 26 to 28. Ms. Dale's jewelry pieces have been purchased by upscale department stores and added to the collections of celebrities such as Cher and Madeline Kahn.

Westfield Craft Market on Tap At Armory from March 26-28

WESTFIELD — The Westfield Craft Market will take place Friday through Sunday, March 26, 27 and 28 at the Westfield National Guard

Armory at 500 Rahway Avenue.

Now in its 16th year at the Armory, the juried show will feature 140 exhibitors. Merchandise will include ceramics, glass, woodworking, iron work, textile, photography, painting and jewelry. A special menu will be prepared by a caterer for the event.

Individuals who go to the show on Friday evening from 5 to 9 p.m. will have their \$6 weekend pass refunded if they do not like what they see. The money back guarantee is only good for that time period.

Free parking will be available across the street from the Armory at Westfield High School, as well as behind the armory. Every hour, \$20 gift certificates will be given away.

Show hours are from 5 to 9 p.m. on Friday, 10 a.m. to 6 p.m. on Saturday and 10 a.m. to 5 p.m. on Sunday. The Westfield Craft Market will return the weekends of November 5 and December 10.

PUBLIC NOTICE PUBLIC NOTICE PUBLIC NOTICE PUBLIC NOTICE PUBLIC NOTICE

BOARD OF EDUCATION 302 ELM STREET WESTFIELD, NEW JERSEY 07090

NOTICE IS HEREBY GIVEN to the legal voters of the School District of the Town of Westfield, in the County of Union, New Jersey, that a Public Hearing for the proposed budget for 1999-2000 will be held on Tuesday, March 23, 1999, in the Board Room of the Administration Building, 302 Elm Street, Westfield, New Jersey, at 8:00 P.M.

The budget will be on file in the office of the Secretary of the Board of Education, 302 Elm Street, for examination by the public between the hours of 9:00 A.M. and 4:00 P.M. each school day, or by appointment.

Robert A. Berman Board Secretary

The Westfield Leader Publication Date: March 18, 1999

SCHOOL DISTRICT BUDGET STATEMENT FOR THE SCHOOL YEAR 1999-2000

Table with columns: ENROLLMENT CATEGORY, ACTUAL, ESTIMATED. Rows include Pupils on Roll Regular Full-Time, Pupils on Roll Regular Shared-Time, etc.

Table with columns: BUDGET CATEGORY, ACCOUNT, ACTUAL, REVISED, ANTICIPATED. Rows include Budgeted Fund Balance - General Fund, Local Tax Levy, etc.

Table with columns: BUDGET CATEGORY, ACCOUNT, ACTUAL, REVISED, ANTICIPATED. Rows include DEBT SERVICE, Revenues from Local Sources, etc.

Table with columns: BUDGET CATEGORY, ACCOUNT, EXPENDITURES, APPROPRIATIONS. Rows include Regular Programs - Instruction, Special Education - Instruction, etc.

Table with columns: PUBLIC NOTICE, PUBLIC NOTICE, PUBLIC NOTICE, PUBLIC NOTICE. Rows include Support Services - General Administration, Support Services - School Administration, etc.

Table with columns: Budget Category, General Fund (Unreserved), General Fund (Reserved), etc. Rows include Est. Appropriation Balances, Amount Budgeted in FY 98-99, etc.

Current state law requires that unreserved general fund balance (surplus) in excess of the established statutory limitation (generally 6% of the prior year budget) must be appropriated in the budget for tax relief purposes. Below are the amounts for the proposed and prior two years given the current statutory limitations:

Table with columns: 1997-98, 1998-99, 1999-00. Rows include 3,270,202, 3,104,782, 1,472,892.

Table with columns: 1996-97 ACTUAL, 1997-98 ACTUAL, 1998-99 ORIGINAL BUDGET, 1998-99 REVISED BUDGET, 1999-00 PROPOSED BUDGET. Rows include Per Pupil Cost Calculations, Total Comparative Per Pupil Cost, etc.

The information presented in columns 1 through 3 as well as the related descriptions of the per pupil cost calculations are contained in the 1999 Comparative Spending Guide and can be found on the Department of Education's Internet address: http://www.state.nj.us/education under Schools. This publication is available in the board office and public libraries. The same calculations were performed using the 1998-99 revised appropriations and 1999-00 budgeted appropriations presented in this advertised budget.

Total Comparative Per Pupil Cost is defined as current expense exclusive of tuition expenditures, transportation, residential costs, and judgments against the school district. For all years except 1996-97, it also includes the new restricted entitlement aids. With the exception of Total Equipment Cost, each of the other per pupil cost calculations presented is a component of the total comparative per pupil cost, although all components are not shown.

1 T - 3/18/99, The Leader Fee: \$538.56