



SUPPORTING YOUTH... Artists Harry and Wende Devlin of Mountainside, pictured left and second from left, display prints of their paintings to be raffled off for the benefit of the Westfield High School girls' lacrosse program. Pictured second from right and far right are lacrosse Co-Captains Katie Gildea and Kelsey III.

Devlins Donate Two Prints To Benefit Girls' Lacrosse

WESTFIELD — Well-known artists Harry and Wende Devlin of Mountainside have donated two prints to be raffled off at the Girls Lacrosse Dessert on Monday, June 7.

Proceeds from the sale of raffle tickets will benefit Friends of Girls Lacrosse, which funds the entire varsity, junior varsity and freshman girls' lacrosse program at Westfield High School.

A limited number of raffle tickets

are available and are priced at \$5 each. They may be purchased at Athletic Balance II at 241 South Avenue, and Juxtapose Gallery at 58 Elm Street, where the framed prints are displayed.

Tickets may also be purchased at Burgdorff Realtors ERA, 600 North Avenue, West.

Matting and framing of the prints have been donated by Juxtapose Gallery, where other Devlin prints are available.

Mount Saint Mary Slates Annual Fashion Show

Mount Saint Mary Academy in Plainfield-Watchung, will hold its 22nd Annual Fashion Show on Sunday, March 21, at 11:30 a.m.

The Mercy Guild of Mt. Saint Mary Academy will sponsor its annual Luncheon/Fashion Show - "Swing into Spring" at the Hanover Marriott Hotel, Route 10, Whippany. All proceeds from the event will benefit the technological and educational needs of the Academy.

The event is noted for a wide-range of theme-inspired gift baskets, which are raffled, as well as specialty items. Last year, three winners of the 50/50

drawing each took home \$2,500.

The fashion show will be coordinated by Christine Modeling and Casting and will feature a variety of spring fashions from Macy's. Prom fashions will also be modeled by Academy students, who will be joined by students from St. Joseph's High School in Metuchen.

Last year the Mercy Guild was able to make a contribution of \$26,000 to the school to assist in upgrading the computer system.

For tickets and information, please call Jackie Yudd at (908) 232-5013 or Judy Darlington at (908) 889-5153.

Community Access to Hold Strategic Fundraising Event

Community Access Unlimited will be the host of the Strategic Fundraising Workshop during the week of March 22 to March 26.

The new training will be offered by the Grantsmanship Center, which is the oldest and largest grantsmanship training organization for non-profits.

The workshop is a comprehensive five-day workshop covering all aspects of developing a strategic fundraising plan for your organization. An overview of the most productive fundraising methods, including annual fund drives, special events, and capital campaigns will be available.

The workshop will also discuss how to do a fundraising audit, apply business techniques to a fundraising plan, write a case statement, and motivate your board to raise money.

The Grantsmanship Center's tuition fee for the program will be \$595. Program registration, which is limited to 25 is handled through the Grantsmanship Center.

For further information about the program or to receive an informational brochure, please call the Grantsmanship Center at 1-800-421-9512 or (213) 482-9860 or Community Access Unlimited at (908) 354-3040.

Recreation Department To Sponsor Art Classes

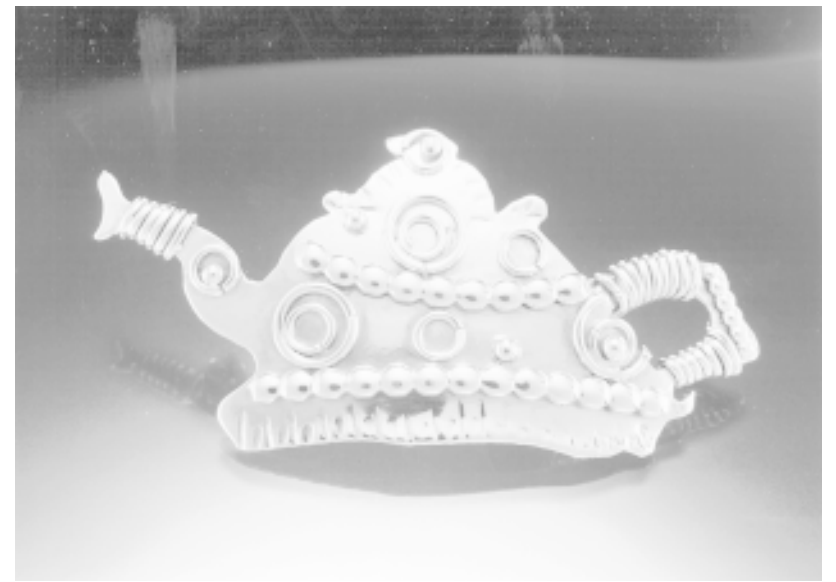
FANWOOD — The Fanwood Recreation Commission will sponsor eight-week long art classes, beginning Friday, April 16.

Subjects to be covered include drawing, painting and sculpture.

Instructor Barbara Prestridge, a local artist and certified art teacher, will lead the course.

Classes will be held on Fridays from 3:45 to 4:45 p.m. for 6 to 9 year old children. Classes for 10 to 14 year olds will be held from 4:45 to 6 p.m. All classes will be held on Fridays.

Registration for the classes will be held on March 27 at the La Grande Building, starting at 9 a.m. The cost is \$35 for residents and \$50 for non residents.



UNIQUE PIECE... This sterling silver pin was hand crafted by Donna Dale, whose work will be exhibited at the Westfield Craft Market at the National Guard Armory on Rahway Avenue. The event, featuring 140 exhibitors, will run from Friday through Sunday, March 26 to 28. Ms. Dale's jewelry pieces have been purchased by upscale department stores and added to the collections of celebrities such as Cher and Madeline Kahn.

Westfield Craft Market on Tap At Armory from March 26-28

WESTFIELD — The Westfield Craft Market will take place Friday through Sunday, March 26, 27 and 28 at the Westfield National Guard

Armory at 500 Rahway Avenue.

Now in its 16th year at the Armory, the juried show will feature 140 exhibitors. Merchandise will include ceramics, glass, woodworking, iron work, textile, photography, painting and jewelry. A special menu will be prepared by a caterer for the event.

Individuals who go to the show on Friday evening from 5 to 9 p.m. will have their \$6 weekend pass refunded if they do not like what they see. The money back guarantee is only good for that time period.

Free parking will be available across the street from the Armory at Westfield High School, as well as behind the armory. Every hour, \$20 gift certificates will be given away.

Show hours are from 5 to 9 p.m. on Friday, 10 a.m. to 6 p.m. on Saturday and 10 a.m. to 5 p.m. on Sunday. The Westfield Craft Market will return the weekends of November 5 and December 10.

Jumble Store to Hold Annual Spring Sale

The Jumble Store's Annual Spring Sale will take place on Saturday, March 27, from 10 a.m. to 3 p.m. in the upstairs room of the store, located at 110 Walnut Avenue in Cranford.

A selection of quality clothing will be featured, along with merchandise ranging from sporting goods to home décor items, as well as gifts appropriate for Easter, Mother's Day and graduation. Refreshments will be available.

The Jumble Store is operated by the Junior League of Elizabeth-Plainfield (JLEP), and all proceeds from the store benefit community service projects.

The JLEP is an organization of women committed to improving their communities through the effective action and leadership of trained volunteers, according to organization spokeswoman Beth St. Raymond.

Membership is open to all women over age 21 regardless of race or creed. For information, please call (908) 709-1177.

PUBLIC NOTICE PUBLIC NOTICE PUBLIC NOTICE PUBLIC NOTICE PUBLIC NOTICE

BOARD OF EDUCATION 302 ELM STREET WESTFIELD, NEW JERSEY 07090

NOTICE IS HEREBY GIVEN to the legal voters of the School District of the Town of Westfield, in the County of Union, New Jersey, that a Public Hearing for the proposed budget for 1999-2000 will be held on Tuesday, March 23, 1999, in the Board Room of the Administration Building, 302 Elm Street, Westfield, New Jersey, at 8:00 P.M.

The budget will be on file in the office of the Secretary of the Board of Education, 302 Elm Street, for examination by the public between the hours of 9:00 A.M. and 4:00 P.M. each school day, or by appointment.

Robert A. Berman
Board Secretary

The Westfield Leader
Publication Date: March 18, 1999

SCHOOL DISTRICT BUDGET STATEMENT FOR THE SCHOOL YEAR 1999-2000

ADVERTISED ENROLLMENTS			
UNION — WESTFIELD TOWN			
ENROLLMENT CATEGORY	OCT. 15, 1997	OCT. 15, 1998	OCT. 15, 1999
	ACTUAL	ACTUAL	ESTIMATED
Pupils on Roll Regular Full-Time	4,742	4,905	5,053
Pupils on Roll Regular Shared-Time	25	26	26
Pupils on Roll — Special Full-Time	560	571	571
Pupils on Roll — Special Shared-Time	54	1	1
Private School Placements	24	59	59
Pupils Sent to Other Distrs-Spec. Ed. Prog.	2	28	28
Pupils Received	1	2	2
Pupils in State Facilities		3	3
Resident Enrollment Per State Aid Calc. - Infor. Only		5,538	5,800
ADVERTISED REVENUES			
BUDGET CATEGORY	1997-98	1998-99	1999-00
GENERAL FUND	ACCOUNT	REVISED	ANTICIPATED
Budgeted Fund Balance - General Fund	10-303	2,088,884	1,650,000
Revenues from Local Sources:			
Local Tax Levy	10-1210	44,047,718	45,177,689
Tuition	10-1300	24,964	1,000
Transportation Fees from Individuals	10-1410		4,000
Unrestricted Miscellaneous Revenues	10-1XXX	950,406	700,200
SUBTOTAL		45,023,088	47,151,360
Revenues from State Sources:			
Transportation Aid	10-3120	446,491	386,791
Special Education Aid	10-3130	2,041,500	2,304,792
Bilingual Education	10-3140	34,336	39,585
Academic Achievement Reward Program	10-3193	214,541	138,460
Other State Aids	10-3XXX	48,870	59,274
SUBTOTAL		2,785,738	3,401,750
Adjustment for Prior Year Encumbrances Act (Excess) Deficiency of Rev. (Over)/Under Expend.		868,791	1,378,978
TOTAL GENERAL FUND		48,677,617	52,203,110
SPECIAL REVENUE FUNDS			
Revenues from Local Sources:	20-1XXX	66,684	206,389
Revenues from State Sources:			
Distance Learning Network Aid	20-3213	120,283	302,380
Other Restricted Entitlements	20-32XX	163,412	205,234
TOTAL REVENUES FROM LOCAL SOURCES		283,695	613,994
Revenues from Federal Sources:			
P.L. 103-382 Title I	20-4411-4414	79,871	79,871
P.L. 103-382 Title VI	20-4415-4416	19,851	19,851
I.D.E.A. Part B (Handicapped)	20-4420	407,513	530,735
Other	20-4XXX	33,102	36,898
TOTAL REVENUES FROM FEDERAL SOURCES		540,337	589,274
TOTAL SPECIAL REVENUE FUNDS		890,716	1,038,108
DEBT SERVICE			
Revenues from Local Sources:			
Local Tax Levy	40-1210	597,562	615,976
Miscellaneous	40-1XXX	597,562	615,976
TOTAL REVENUES FROM LOCAL SOURCES		1,195,124	1,231,952
TOTAL LOCAL DEBT SERVICE		1,195,124	1,231,952
Act (Excess) Deficiency of Rev. (Over)/Under Expend.		2	2
TOTAL DEBT SERVICE FUND		1,195,126	1,231,954
TOTAL REVENUES/SOURCES		50,165,897	54,460,623
ADVERTISED APPROPRIATIONS			
BUDGET CATEGORY	1997-1998	1998-1999	1999-00
GENERAL CURRENT EXPENSE	ACCOUNT	REVISED	APPROPRIATIONS
Regular Programs - Instruction	11-1XX-100-XXX	19,285,014	20,258,452
Special Education - Instruction	11-2XX-100-XXX	2,630,515	2,714,624
Basic Skills/Remedial - Instruction	11-230-100-XXX	680,818	684,366
Bilingual Education - Instruction	11-240-100-XXX	154,138	163,297
School Sponsored Occurricular Activities - Instruction	11-401-100-XXX	222,608	191,784
School Sponsored Athletics - Instruction	11-402-100-XXX	654,143	708,694
Undistributed Expenditures:			
Instruction	11-000-100-XXX	2,700,845	2,898,479
Attendance and Social Work Services	11-000-211-XXX	59,736	96,805
Health Services	11-000-213-XXX	773,153	785,821
Other Support Services - Students - Related and Extraordinary	11-000-216,217	682,831	824,721
Other Support Services - Students - Regular	11-000-218-XXX	1,014,909	1,189,880
Other Support Services - Students - Special	11-000-219-XXX	959,058	986,921
Improvement of Instructional Services	11-000-221-XXX	669,704	787,356
Educational Media Services-School Library	11-000-222-XXX	1,104,830	1,062,689
Instructional Staff Training Services	11-000-223-XXX	68,991	117,353

Support Services - General Administration <th style="text-align: right;">11-000-230-XXX <th style="text-align: right;">820,972 <th style="text-align: right;">1,133,352 <th style="text-align: right;">1,114,254 </th></th></th></th>	11-000-230-XXX <th style="text-align: right;">820,972 <th style="text-align: right;">1,133,352 <th style="text-align: right;">1,114,254 </th></th></th>	820,972 <th style="text-align: right;">1,133,352 <th style="text-align: right;">1,114,254 </th></th>	1,133,352 <th style="text-align: right;">1,114,254 </th>	1,114,254
Support Services - School Administration	11-000-240-XXX	2,643,648	2,695,604	2,607,094
Operation & Maintenance of Plant Services	11-000-26X-XXX	3,679,474	4,381,592	4,513,386
Student Transportation Services	11-000-270-XXX	1,241,603	1,253,335	1,292,295
Business & Other Support Services	11-000-290-XXX	1,002,797	979,564	943,693
Personal Services - Employee Benefits	11-XXX-XXX-2XX	4,868,165	5,411,090	5,782,440
Food Services	11-000-310-XXX	55,188	61,559	50,500
Total Undistributed Expenditures		23,345,904	24,666,121	25,742,099
TOTAL GENERAL CURRENT EXPENSE		45,973,140	49,387,338	51,276,977
CAPITAL OUTLAY				
Equipment	12-XXX-XXX-73X	447,706	279,482	79,653
Facilities Acquisition & Construction				
TOTAL CAPITAL OUTLAY	12-000-4XX-XXX	2,215,847	2,497,640	793,643
SPECIAL SCHOOLS		2,663,553	2,777,122	873,296
Instruction	13-422-100-XXX	38,664	43,196	44,542
Summer School:				
Support Services	13-422-200-XXX	2,260	5,096	8,295
Total Summer School		40,924	48,292	52,837
TOTAL SPECIAL SCHOOLS		40,924	48,292	52,837
GENERAL FUND GRAND TOTAL		48,677,617	52,212,752	52,203,110
SPECIAL REVENUE FUNDS				
Local Projects	20-XXX-XXX-XXX	66,684	206,389	166,550
Distance Learning Network Aid:				
Support Services	20-213-200-XXX	120,283	213,841	213,841
Facilities Acquisition and Construction				
Services	20-213-400-XXX	88,539	77,050	77,050
TOTAL DISTANCE LEARNING NETWORK AID		120,283	302,380	243,600
Other State Projects:				
Nonpublic Textbooks	20-XXX-XXX-XXX	25,632	27,297	27,297
Nonpublic Auxiliary Services	20-XXX-XXX-XXX	21,964	41,441	41,441
Nonpublic Handicapped Services	20-XXX-XXX-XXX	81,653	100,391	100,391
Nonpublic Nursing Services	20-XXX-XXX-XXX	34,163	36,105	36,105
Other Special Projects	20-XXX-XXX-XXX	283,695	106,380	448,834
Total State Projects		283,695	613,994	613,994
Federal Projects:				
P.L. 103-382 Title I	20-XXX-XXX-XXX	79,871	79,871	79,871
P.L. 103-382 Title VI	20-XXX-XXX-XXX	19,851	19,851	19,851
I.D.E.A. Part B (Handicapped)	20-XXX-XXX-XXX	407,513	530,735	530,735
Other Special Projects	20-XXX-XXX-XXX	33,102	36,898	36,898
Total Federal Projects		540,337	589,274	589,274
TOTAL SPECIAL REVENUE FUNDS		890,716	1,409,657	1,038,108
DEBT SERVICE FUNDS				
Debt Service - Regular	40-701-510-XXX			