

Scotch Plains PAL 'A' Stops Staten Island Grid Kids, 7-6

The Scotch Plains PAL "A" football team beat Staten Island 7-6 and qualified for the Super Bowl to be played on October 24 at Scotch Plains High School. The Raiders upped their record to 8-0 and elevated their three-year record to 28-0. The rugged Raider defense has given up only two offensive touchdowns this season. Staten Island scored first and then the Raider defense thwarted the potent Staten Island offense. Linebacker Matt Wolff was all over the field and led the team with seven tackles, a season high for the team. Linebackers Robert Scibek, with five tackles, and Thomas Pennella, with four tackles, were key factors, stuffing the inside runs and stopping the sweeps.

Strong defense support came from Greg Brand, Richard Nix and David Belford who all had three tackles each and with all three making critical plays to stop offensive scoring drives. Brand stripped and recovered the fumble to stop a critical drive and recovered another fumble. Belford had two interceptions and Nix snuffed out a screen pass to stop game ending drives. Lauren Mains also recovered a fumble to stop another drive. The Raiders' only scoring drive was when Belford hit Andrew Lyons with a 25-yard streak down the left side. Belford hit Brian DeWitt for the game-winning extra point. Belford had 50 yards on 10 carries and Scibek had four receptions for 54 yards.



LOOKING FOR A RECEIVER...Westfield PAL "C" quarterback Tony DiIorio, No. 17, rolls left and scans downfield against Staten Island. The Staten Islanders defeated the Westfield boys, 20-0.

Scotch Plains PAL 'A' Beats Millburn, 7-0, Westfield, 7-6


Emphasis on team defense by Coach Ed Belford has paid off as the Scotch Plains PAL "A" football team improved to 7-0 and 27-0 over a three-year period after beating Millburn, 7-0, and Westfield, 7-6. Additionally, the Raiders' diverse offense, featuring strong running and accurate passing, proved quite effective. Against Millburn, the only scoring came on a 35-yard touchdown (TD) pass from David Belford to Andrew Lyons and a Belford-to-Brett Jones pass for the extra point. On that drive, Belford had a 17-yard keeper and Matt Huether, who had 37 yards on six carries, had some rugged inside runs. The defense shut down the Millburn offense. Lyons made seven tackles, Belford made five and Greg

Brand, Matt Wolff, John Badala and Lauren Mains made four tackles each. Mains also recovered a fumble. Colin Campbell made the play of the game when he stripped the ball and recovered it to stop a key Millburn drive. The Raiders stopped Westfield on great defensive play and a lot of heart. Westfield scored first but the Raider defense took over with a couple of goal line stances. Wolff made a key interception to stop a drive. Brand was all over the field and led the team with six tackles. Badala made six tackles, Thomas Pennella and Campbell made five and Belford had four. The Raiders scored when Belford hit Scibek for a 10-yard TD pass. Earlier in the drive, Belford hit Scibek with a 43-yard bomb. Belford hit Pennella for the winning extra point.

SP-F Soccer Sparx Bounce Branchburg Shooters, 3-1

The U12 Sparx girls soccer team defeated the Branchburg Shooting Stars, 3-1, at Park Middle School Field in Scotch Plains on November 4. The Sparx, who have won six games via shutout, boosted their record to 8-0 and lead the pack in MNJSA flight 3. The Sparx found themselves in an unfamiliar situation when Branchburg scored first. Despite numerous shots on goal, the Sparx closed out the first half scoreless. In the second half, the Sparx defense of Gabriella Pinho, Gina Egidio and Sam Bremer, along with midfielders Olivia Francavilla, Allison Goldberg, Brittney Veeck, Sheryl Markovitz and Kim Shelus

were constantly on the move against a hyped up Shooting Star offense who were outplaying the Sparx. Goalie Jaelyn Law did an excellent job, making several diving saves and changing the field with her long punts. Momentum finally changed when Gabby Clarke on the wing sent a pass across to Jennie Altman, which was deflected by the goalie but then popped in by Goldberg to tie the game. Within minutes, Clarke sent another pass to Altman who chipped in the go-ahead goal. The Sparx offense continued to pressure with shots fired off by Becca VonLangen and Erika White. Finally, Clarke who already had two assists, fired in a rocket from 25 yards out.




Hye-Young Choi
#1 Realtor in the Westfield Office 1994-2001
Visit me at my website:
www.Realtor.com
www.coldwellbankermoves.com/hye-young.choi
email: hye-young@att.net
Contact Hye-Young Choi Today for the Perfect Home!

OPEN HOUSE: Sunday, Nov. 24th, 1-4 PM
865 Hillside Avenue, Mountainside



Beautifully restored 6 BR, 2 full and 2 half BTH home in Westfield location. Gracious sized rooms, tasteful décor, newer BTHS, Cherry KIT w/ bright and airy dining area adjacent to FR w/ back staircase. New RecRm, CAC, 2CG, 40' blue stone patio, park-like property. (WSF6798) \$750,000

Westfield Office
209 Central Avenue
908-233-5555, ext. 169
Direct Line: 908-301-2015

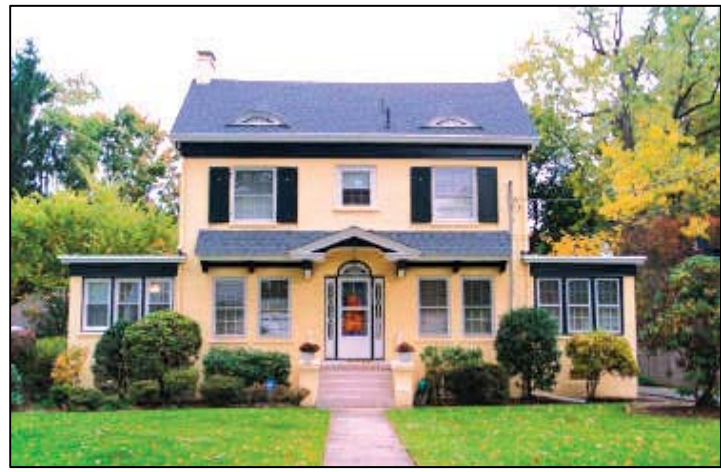


Kimberley A. Haley

Expect More

INTERNATIONAL PRESIDENT'S PREMIER 2001

PREMIER WESTFIELD PROPERTIES



Situated on one of Westfield's most sought after streets, this classic center hall Colonial home boasts, 4 bedrooms, 3 full and 2 half bathrooms. Charm abounds throughout this fine home. The main living level provides spacious retreats on either side of the center hall. The Living Room is warmed by a wood burning fireplace and accented by custom built-ins. The French doors lead to the sun filled Den. The Dining Room, underlain by hardwood floors, opens to the Family room and eat-in Kitchen with oak cabinetry, Corian counters and new appliances. Additional family space is abundant in the finished recreation room with laundry area and powder room. Easy walk to elementary and middle schools, downtown and NYC transportation. Offered at 699,900



Charming 3 Bedroom, 1.5 Bath Colonial offers ideal location on a quiet tree lined street. This pristine home boasts a Formal Dining Room with chair rail and dentil molding, Living Room with Fireplace, and hardwood floors throughout. The new eat-in Kitchen with Corian countertops and white cabinetry is light and bright with new walk out bay window overlooking the professionally landscaped yard. The second floor offers three bedrooms and a walk up attic with expansion possibilities. Many upgrades includes new roof, new windows, new electric, new bathrooms, finished recreation room and much more. Offered at \$479,900



Coldwell Banker

Residential Brokerage

(908) 301-2004 - Direct Line
KimHaley@coldwellbanker.com
www.KimHaley.com



Business (908) 233-5555
209 Central Avenue, Westfield, NJ 07090

Coldwell Banker moves.com

Coldwell Banker®, Since 1906, America's Premier Real Estate Company



WESTFIELD \$325,000
Move-in condition custom Cape. 3 Bedrooms, 1.1 Baths, jalousied breezeway, Formal Dining Room, full Basement. (WSF6668)




WESTFIELD \$749,000
Unique 1905 Victorian with wrap around porch, 5 Bedrooms, 2.1 Baths, tin ceiling and 7 bay windows. Many updates. (WSF6877)



MOUNTAINSIDE \$559,900
Custom built, very charming Expanded Ranch. Large Living Room with fireplace, Formal Dining Room, Florida Room, Den & more. (WSF6767)

Some people think just any real estate company will do. Others expect more.
Concierge Services 800.353.9949 • Coldwell Banker Mortgage Services 1.888.317.5416 • Previews International Estates Division 800.575.0952
Westfield 209 Central Avenue 908.233.5555


Denotes Open House



www.nymetro.coldwellbanker.com www.coldwellbanker.com

RESIDENTIAL BROKERAGE

*For the second year in a row, coldwellbanker.com earns Forbes' Best of the Web® designation.



© 2001 Coldwell Banker Corporation. Coldwell Banker® is a registered trademark of Coldwell Banker Corporation. An Equal Opportunity Company. Equal Housing Opportunity. Independently Owned and Operated by NRT Incorporated.

CYAN YELLOW MAGENTA BLACK