

NEWARK
UNION
FANWOOD
RIVER
TOMS
MOUNTAIN
SIDE



Children's Specialized Hospital—
Where families turn for the
answers to some tough
questions about children.

Knowing where to turn
for help is critical.

Diagnosing and treating
children and providing
information, training and
support for their parents is
not an adjunct to our work
at Children's. It is the life's
work of every one of the unique
professionals on our staff.

We want to hear your questions.



908-233-3720
732-914-1100

Editor's Note

Past Village-Like Atmosphere of Westfield Is Easy to Trace Despite Modern Facades

By MICHELLE H. LePOIDEVIN
Specially Written for This Is Westfield

As a little girl from Linden, I used to come to Westfield to buy my shoes from Epstein's Bootery, my Christmas cards from Jeanette's Card Shop, and my favorite stuffed animals from Pickwick Village. Even though all of these establishments have vanished, my memories of the village-like flavor of Westfield are clear and cherished.

The historic architecture of the town, mixed with the pride of its people have made Westfield an unparalleled and unique community admirable to all surrounding towns and boroughs.

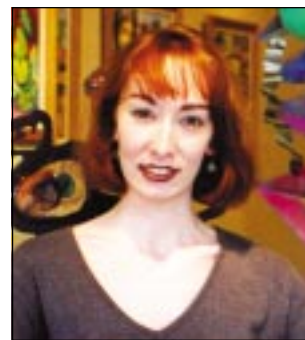
Rich in history, there are few places in Westfield where one cannot trace some aspect of the town's ancestors and garner a new understanding and appreciation for those who have effortlessly shaped the community.

The War Memorial towers with esteem over Westfield's buildings, serving as a beacon to visitors entering the town and a historic focal point for those who are curious about those who served and sacrificed their lives in World War I.

Mazes of intricately woven and quaint homes comprise many of Westfield's historic neighborhoods, such as Boulevard and Kimball Avenue.

Once again, war veterans are not forgotten by the innumerable street signs such as

Salter Place, Hanford Place and Coleman Place which have been erected to remind us of the soldiers who fought valiantly, representing Westfield, New Jersey, USA - only to never return.



Michelle H. LePoidevin

The historic buildings such as Arcanum Hall and the Darsh Building, although among our more modern structures, still serve as foundation for our appreciation of the town's founding fathers and architects.

I would like to commend Westfielders for their maintenance, pride and preservation of their town's colorful tapestry. Each of you have contributed an unforgettable thread to keeping the town's reputation in high regard.

As the editor of this publication, I would like to offer a bounty of thanks to the staff writers and contributing journalists and photographers for *This Is Westfield*.

Our cover artist John Russell, architect Robert Algarin and his endearing son, Christopher, deserve the highest of accolades for producing and conceiving of such a stellar cover.

I would like to thank our publisher, Horace R. Corbin, for granting me the opportunity to craft and produce this publication each year.

I hope you, the reader, enjoy this glance at Westfield's finest architecture, townspeople and memories.

Mayor's Note

From A Small Farming Community to Today, Westfield Continues to Grow Tremendously

By MAYOR THOMAS C. JARDIM
Specially Written for This Is Westfield

On behalf of the Town Council, I commend *The Westfield Leader* for this annual issue of *This is Westfield*.

Westfield has been a community since pre-Revolutionary times, and for more than the last 100 years of its history, *The Westfield Leader* has been keeping the community informed on the important events in the life of the town.

Over the years, the town has grown from a small farming community in the "West Fields" of Elizabethtown to a community that is nearly fully developed. As we move forward into a new millennium, the great challenge for Westfield will be to retain its small town feel while still providing the services and amenities that its residents have come to expect.

By promoting the conservation of historic sites and districts; by preserving open space, energy resources and valuable natural re-

sources in the town; and to prevent urban sprawl and the degradation of the environment through the improper use of the land within the town's borders, we can meet the challenge that faces us.



Mayor Jardim

These goals can be accomplished by means of protecting the many historic homes in the town, investing in improvements to our parks, fields and recreation areas and by preserving the quality of the roads, sidewalks and shade trees throughout the town.

The Town of Westfield has a well-deserved reputation for community involvement and volunteerism, and I urge you to become an active participant in our community.

To learn more about the Westfield community and its many activities, events and services, log onto the town's Web site at www.westfieldnj.net.

Finally, do not hesitate to contact the town or any of your elected representatives and let us know if we can assist you in any way.

Come See Our New Look Westfield

SHOPPERS

Fine Wines & Spirits

Under New Management



Sign Up for Our
Club Card

and Receive a
20% Discount

on Selected Wines

by the case

Stop in Today and Browse Through Our
Temperature Controlled Wine Room with
More Than 100 Super Premium & Hard to Find Items

333 South Avenue, East
Westfield
908-232-8700

New Hours
Monday-Thursday 9am - 9pm
Friday & Saturday 9am - 10pm
Sunday Noon - 7pm